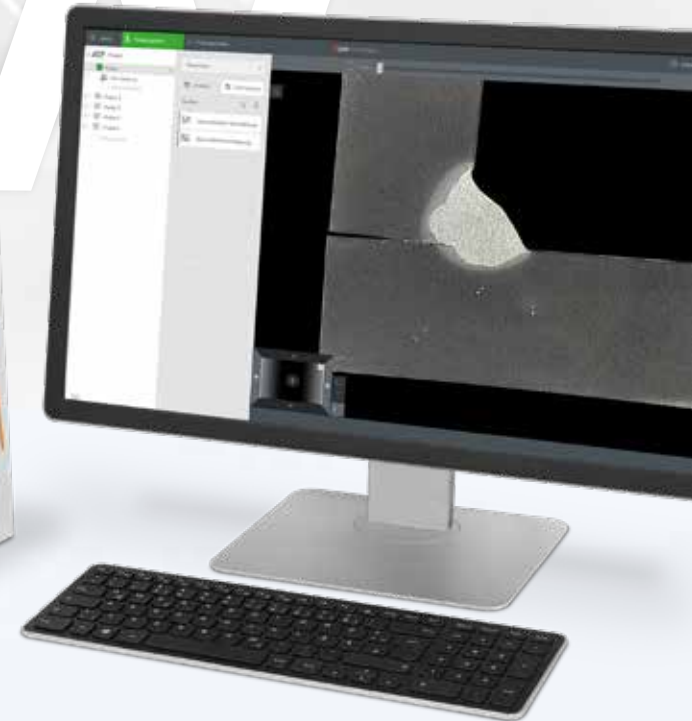


NEW

 PRODUCT RELEASE:
TRADE FAIR CONTROL 2022



Qeye 800

OPTICAL ANALYZER - INVERSE MACROSCOPE

**WELD SEAM MEASUREMENT
FAST, HIGH-RESOLUTION AND EFFICIENT**

4K ULTRA HD

OPTICAL SYSTEM

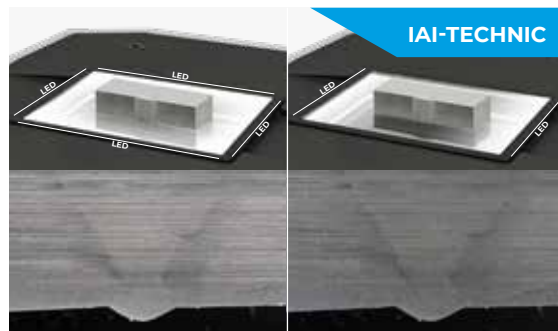
Qeye impresses with absolute precision:

- | 8.5 megapixel camera system
- | 20x optical zoom
- | 35x combined zoom (optical and digital)
- | Large field of view 80 x 60 mm - 2.3 x 1.7 mm
- | Built-in automatic autofocus and brightness control
- | Focus plane can be manually adjusted for measurements of non-planar components



INNOVATIVE OPERATION

CONVINCING BENEFITS



OPTIMIZED SPECIMEN ILLUMINATION

IAI = Intelligent Area Illumination. The Qeye system features innovative LED analysis area illumination. Each of the 4 illumination profiles (right, left, front, rear) can be switched on or off smoothly and individually. This now enables faster and more precise testing, without the disturbance of light influences or grinding reflections.



TOUCH CONTROL PANEL

Qeye offers impressive ease of use via freely programmable capacitive buttons. Once centered, the Q lights up to indicate the current status, and used to trigger imaging. The buttons located in the corners can be configured to control LED illumination, zoom, field of view and brightness. The soft-touch control panel is responsive, even when used with gloves.



QEYE COVER

Unique and innovative, the Qeye Cover is attached to the Qeye as a shielding hood using a magnetic system. Precise tests without extraneous light and without reflections can thus be analyzed very quickly.



QPIX CONTROL2 SOFTWARE

Operated by tried and trusted Qpix Control2 software. Combination of hardness testing and optical analysis in a familiar user interface using just one PC. Efficient measurement and inspection of weld specimens in seconds, live image, 3D Smartview and a uniform reporting system for hardness testing and macro analysis.



FEATURES AND BENEFITS

Qeye saves time, providing detailed analysis and measurement with supreme accuracy. Robust modern industrial design. Easy replacement of the glass sample carrier. Absolutely dust-tight due to assembly in a clean room.

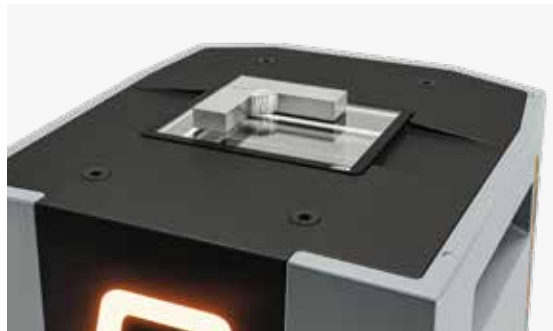
APPLICATIONS

BENEFITS OF PRACTICAL EXPERIENCE



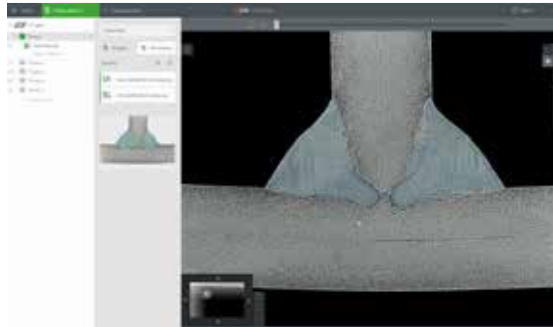
MEASURING TOOLS

Precise measurement tools ensure the fast and easy measurement of specimens. Lengths, angles, circle, polygons for area or perimeter calculations. Zoom and brightness can be calibrated individually.



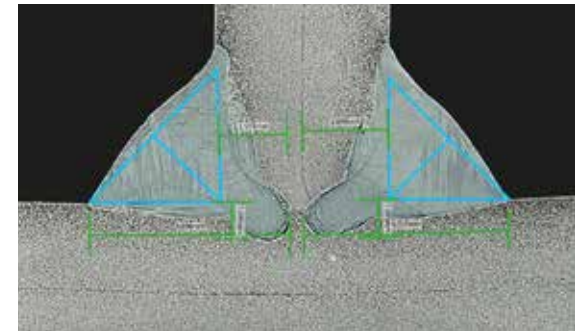
WELDING SAMPLES

Qeye guarantees fast, simple, precise, standardized weld inspection, and displays all irregularities. Documentation of abnormalities can be added to a measurement at any time. The use of template systems in reporting ensures unlimited precise repeatability and reliability in regard of procedures, measurement sequences and limit values.



TEMPLATE OPERATION

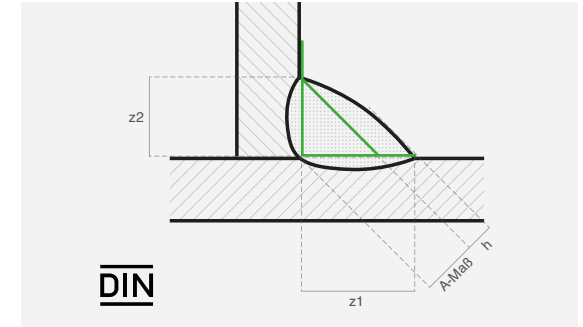
Individual customer templates can be saved and recalled at any time. Predefined measurement elements and the QATM standard catalog are also preinstalled in the system.



WELDING SEAMS

Fillet weld measurement with full range of intuitively operated measurement tools

- | Easy adjustment of measuring lines
- | Seam quality evaluation
- | Recordable notes



STANDARD-COMPLIANT TEST EQUIPMENT

All necessary measuring tools are, of course, a basic component of the software for inspections according to DIN EN ISO 5817. For example: the A dimension, the depth of burn-in, evaluation limits and a standard-compliant inspection report.

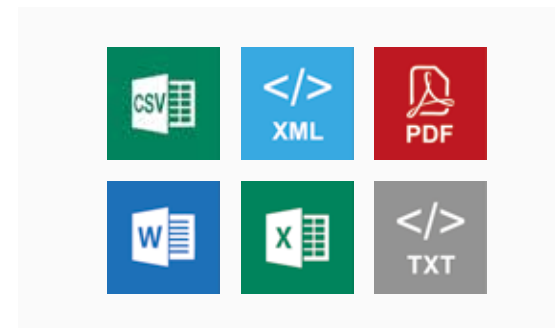
INDUSTRY 4.0

EQUIPPED FOR THE PRESENT AND THE FUTURE



PROFESSIONAL DATA MANAGEMENT

Benefit from clearly-structured batch management, the effective template use of various test projects, well-organised measurement results and all job information in the background. Once created, templates receive all requisite information about test samples, including test methods, designations and user-field information.



AUTOMATIC EXPORT FUNCTIONS

Many professional export functions are available as standard with QATM: raw data export in CSV/TXT and XML; report export in MS Word, Excel, PowerPoint and PDF - output part-related or as a single export. All export configurations can be stored individually for templates.



BARCODE/QR-CODE/DMC-READER

Qpix software platforms support the use of barcode and QR code readers, simplifying workflows for inspectors and preventing operator error. Populating header data is simple (standard), and readers can be fully integrated to automatically select templates or retrieve data from higher-level systems (optional).



QCONNECT

Qconnect is the interface in the QATM Qpix Control2 software that combines all connectivity options for our customers. From the standard, open XML interface (bi-directional), to pre-specified plug-in solutions such as the QDAS Plug-In+, to fully customized connectivity solutions implemented by QATM - we find a professional solution for every application.



FIND OUT MORE ABOUT THE INTERCOMPATIBILITY OF THE QATM PRODUCT FAMILY

#QATMCONNECTEDFUTURE

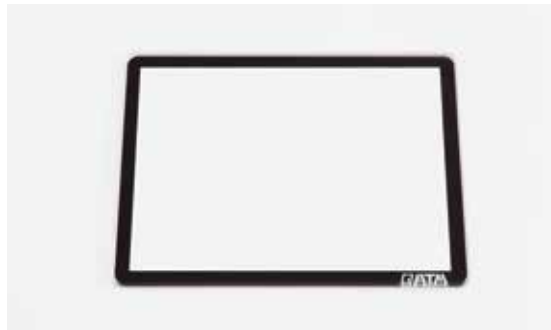
ACCESSORIES & TOOLS

PRECISE, CLEAN AND UNCOMPROMISING



OBJECT MICROMETER

A 50 mm object micrometer with a resolution of 0.1 mm guarantees easy and accurate control of optical magnification. Optionally available with a UKAS certificate.



SAMPLE CARRIER

Sample carriers are small but extremely important tools in sample analysis. Available in sets of 5, made of borosilicate glass with anti-reflective coating. Optionally available in tempered borosilicate glass.



FULLY-INTEGRATED SYSTEM SOLUTION

The new Qeye can also be integrated into a test lab table. Adapted to individual requirements, height-adjustable and optionally available with a hardness tester for every laboratory.



QEYE COVER

The Qeye shielding hood absorbs extraneous light and reflections are completely eliminated. Included as standard with every Qeye.



QATM CLEANING MATERIALS

High-quality microfiber cloths, cleaning cloths and special glass cleaners for a perfect shine. We recommend the use of specially-developed QATM cleaning material only.



INCLUDED IN THE SCOPE OF DELIVERY OF THE QEYE 800

- | Set of 5 glass sample holders
- | Qeye cover
- | QATM microfiber cloth
- | QATM cleaner
- | Power supply and USB connection cable
- | Instruction manual
- | Accessories case

Qeye 800

| | |
|---|--|
| Field of view | 80 x 60 mm - 2.3 x 1.7 mm (3.1 x 2.4" - 0.091 x 0.067") |
| Zoom levels | 1x - 1.5x - 2x - 2.5x - 4x - 5x - 10x - 20x - 30x - 35x |
| Zoom | optical: 1x - 20x, digital: 30x - 35x |
| Camera | 4K Ultra HD - 8.5 megapixel - USB 3.0 |
| Illumination | IAI - LED unit (Intelligent Area Illumination) |
| Software | Qpix CONTROL[®] |
| Machine operation | external PC system (Windows 11 64-bit) |
| Dimensions glass sample carrier (L x W x H) | 95 x 75 x 2 mm (3.7 x 3.0 x 0.08") |
| Max. sample weight | 5 kg (11 lbs) |
| Interface | 1 x USB 3.0 |
| Power supply | 100 - 240 V ~1/N/PE, 50 - 60 Hz |
| Power consumption | Idle: ~35 W Operation: ~60W Max. ~100 W |
| Dimensions | 220 x 220 x 260/365* mm (8.7 x 8.7 x 10.2/14.3") *inkl. Qeye cover |
| Space requirement (L x W) | 300 x 300 mm (11.8 x 11.8") |
| Weight | 16 kg (35.3 lbs) |
| Ambient temperature | 18 - 28 °C (64 - 82 °F) |
| Humidity | maximum 70 % - non-condensing |

ATM Qness GmbH

Emil-Reinert-Str. 2
57636 Mammelzen
Germany

Phone: +49 2681 9539 0
Fax: +49 2681 9539 27



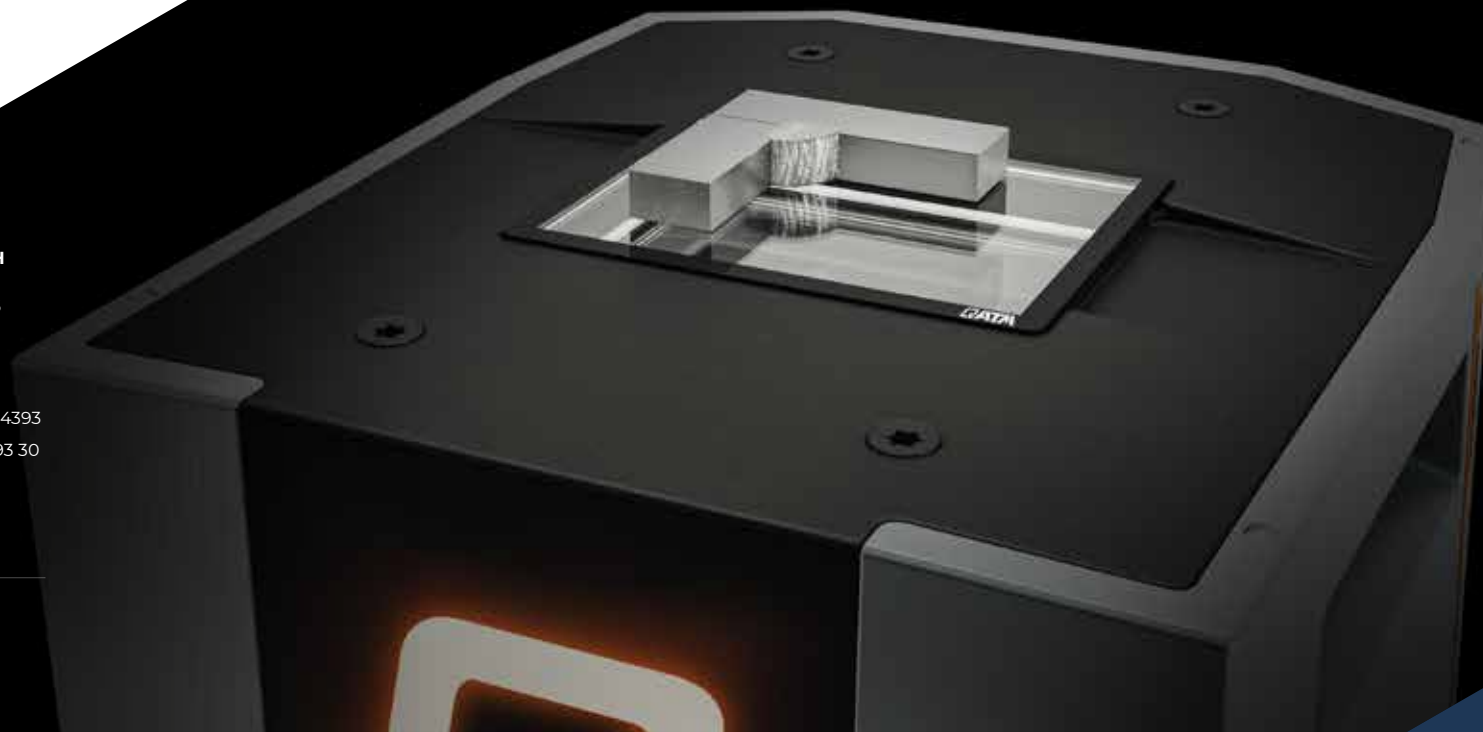
ATM Qness GmbH

Reitbauernweg 26
5440 Golling
Austria

Phone: +43 6244 34393
Fax: +43 6244 34393 30



info@qatm.com www.qatm.com



VERDER
scientific

VERDER SCIENTIFIC

**SCIENCE
FOR SOLIDS**

Verder Scientific is a business field belonging to the Verder Group and sets standards in the development, manufacture and sale of laboratory and analytics devices. Used in quality control, research and development for test-piece preparation and the analysis of solids.

For several decades our companies have supplied production plants and research institutes, laboratories for quality testing and analytics, all kinds of technical specialists and scientists with modern, reliable devices to solve the many and varied challenges they face.

