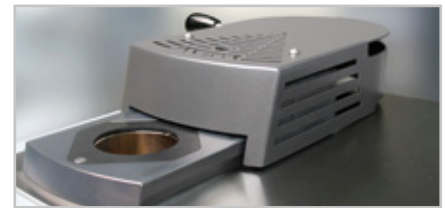
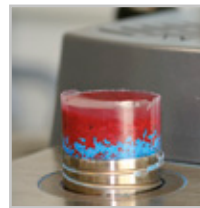




SLIDING CLOSURE

The new sliding closure is a unique innovation and allows quick and easy opening/closing of the mould assembly. By actuating the lever, the closure slides to the correct position. After initiating the cycle the mould closes and reopens automatically on completion.



OPAL 480

The OPAL 480 is a fully hydraulic, water cooled hot mounting press for mounting samples before polishing.

The process sequence is executed automatically.

The fully automatic sliding closure allows quick and easy opening/closing of the mould assembly.

Mould assemblies can be exchanged quickly and without tools.

Also rectangular moulds can be produced.

The robust aluminium construction is powder coated.

With its solid construction and ATM hydraulic system, the operating noise of the machine is minimized.

SIMPLE OPERATION

After pressing the start key, the fully automatic program sequence is executed with the preselected parameters. The parameters can be changed and adjusted during the mounting process.



ELECTRONIC CONTROL

With its clear LCD operation panel you can easily control the hot mounting press. You can load and save eighteen different mounting processes.



MOULD ASSEMBLIES

Our comprehensive selection of mould assemblies from \varnothing 50 - 70 mm resp. 30x60/40x60 mm (rectangular form) enables optimum mounting of your sample. Two mounts can be produced simultaneously with the use of a spacer.

PRESSURE MODE

Besides the standard operation, you can choose between different pressure methods:

- » pressure increases parallel with the pre-heating phase (ideal for hollow specimens, e.g. rings).
- » pressure increases after the preset temperature is reached to produce mounts as gap free as possible (ideal for complex geometries).

COOLING

Not only the cooling time, but also the resulting cooling curve can be adjusted infinitely according to the mounting requirements. Thereby, a considerably lower water consumption is achieved for longer cooling times.

HEATING

Our high-power heating system gives a very short warm-up time. For delicate samples the machine can adjust the heating curve infinitely.

**OPAL 480****BASIC MODULE**

Order No.: M0790000

- » automatic hot mounting press
- » fully hydraulic operation with automatic water cooling (with water saving function)
- » completely new and simple automatic closure system
- » computer controlled with automatic cycle processing
- » four different pressure modes
- » rectangular moulds
- » easy change of mould assemblies
- » aluminum case, powder coated

EQUIPMENT**POWER SUPPLY**

Equipment 1

230 V/50 Hz (1Ph/N/PE)

Order No.: A0790000

Equipment 2

110 V/60 Hz (1Ph/N/PE)

Order No.: A0790001

ACCESSORIES**COOLING UNIT****Recirculation unit**

» extern

230 V/50 Hz (1Ph/N/PE)

Order No.: Z0730007

110 V/60 Hz (1Ph/N/PE)

Order No.: Z0730008

Cooling	0.81 kW
Motor	0.6 kW
Flow pressure	2.8 bar
Tank	6 ltr.
WxHxD	440x345x565 mm

System cooling unit

» integrated in drawe

230 V/50 Hz (1Ph/N/PE)

Order No.: A5810171

110 V/60 Hz (1Ph/N/PE)

Order No.: A5810172

Cooling	0.81 kW
Motor	0.6 kW
Flow pressure	2.8 bar
Tank	6 Ltr.



ACCESSORIES

INSETS

**Mould assemblies**

» cylinder, upper and lower ram

	Order No.:
Ø 50 mm	Z0790000
Ø 60 mm	Z0790001
Ø 70 mm	Z0790002
□ 30x60 mm	Z0790003
□ 40x60 mm	Z0790004

**Spacer**

» for double mounts

	Order No.:
Ø 50 mm	00702118
Ø 60 mm	00702025
Ø 70 mm	00702026

CONNECTION SET



Order No.: Z0730003

2x pressure tube	R 1/2"; 2 m long
Adapter	for 3/4"

Order No.: Z0730004

» connection set for two Opal presses

SPECIFICATIONS

Mould	Ø 50 - 70 mm
Mould (rectangular)	30x60 / 40x60 mm
Connected load	3.6 kVA
Power supply	1 230 V/50 Hz (1Ph/N/PE)
	2 110 V/60 Hz (1Ph/N/PE)

Heating time	variable / 0 - 30 min
Cooling time	variable / 0 - 30 min
Max. pressure	up to 310 bar depending on mould

Heating	4 x 630 Watt
Temperature range	20 - 200 °C

WxHxD	390x450x500 mm
Weight	68 kg

